



**DIPLOMATIC
HYDRAULICS**

21 210/199 ED



RM*-W PRESSURE CONTROL VALVES

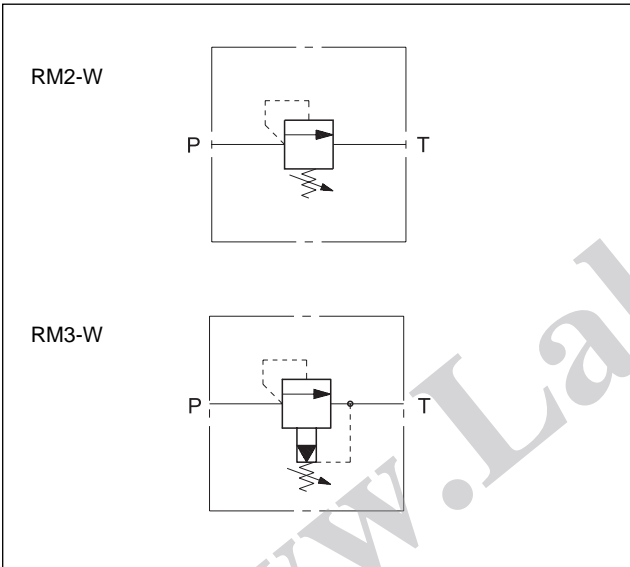
**RM2-W SERIES 31
RM3-W SERIES 30**

THREADED PORTS

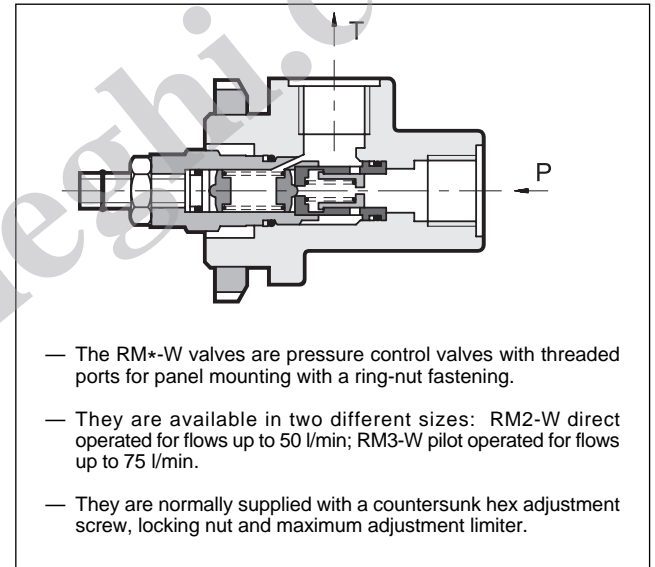
p max 350 bar

Q max (see performance ratings table)

HYDRAULIC SYMBOLS



OPERATING PRINCIPLE

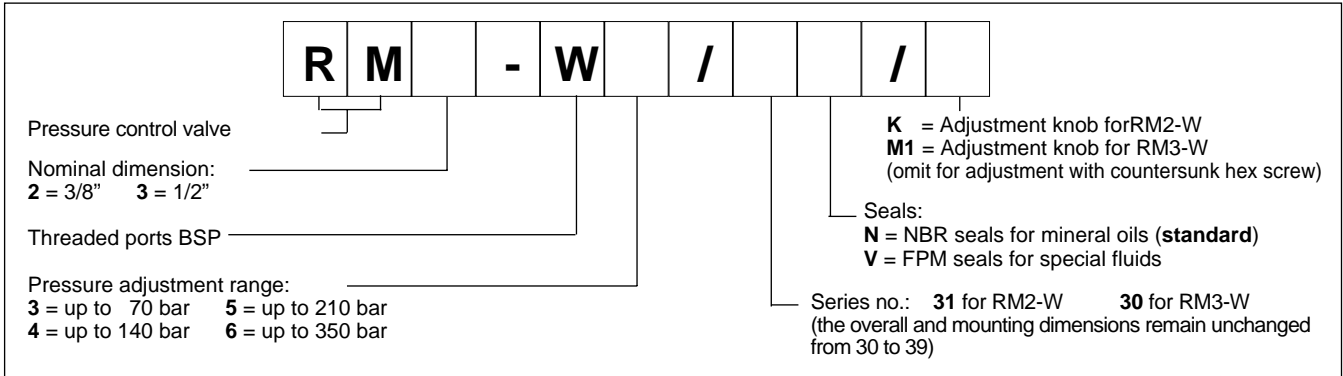


- The RM*-W valves are pressure control valves with threaded ports for panel mounting with a ring-nut fastening.
- They are available in two different sizes: RM2-W direct operated for flows up to 50 l/min; RM3-W pilot operated for flows up to 75 l/min.
- They are normally supplied with a countersunk hex adjustment screw, locking nut and maximum adjustment limiter.

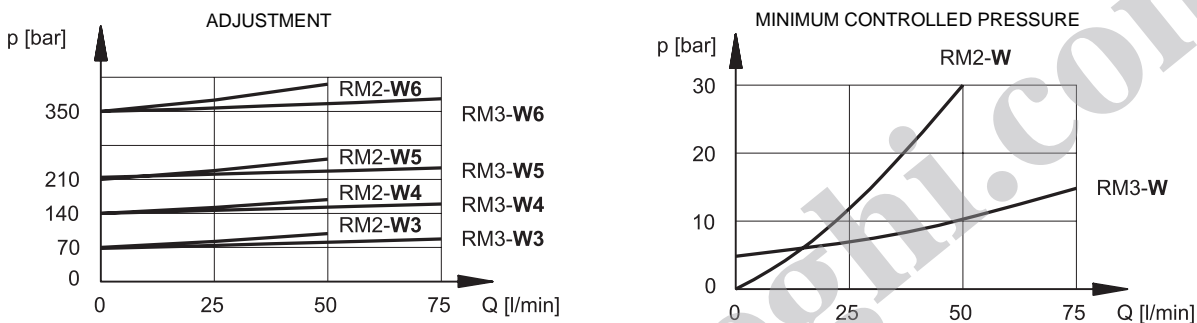
PERFORMANCE RATINGS (measured with mineral oil of viscosity 36 cSt at 50°C)		RM2-W	RM3-W
Maximum operating pressure	bar	350	350
Minimum controlled pressure		see diagram	
Maximum flow rate	l/min	50	75
Ambient temperature range	°C	-20 ÷ +50	
Fluid temperature range	°C	-20 ÷ +70	
Fluid viscosity range	cSt	2,8 ÷ 380	
Recommended filtration	µm absolute	≤ 25	
Recommended viscosity	cSt	25	
Mass	kg	0,9	



1 - IDENTIFICATION CODE



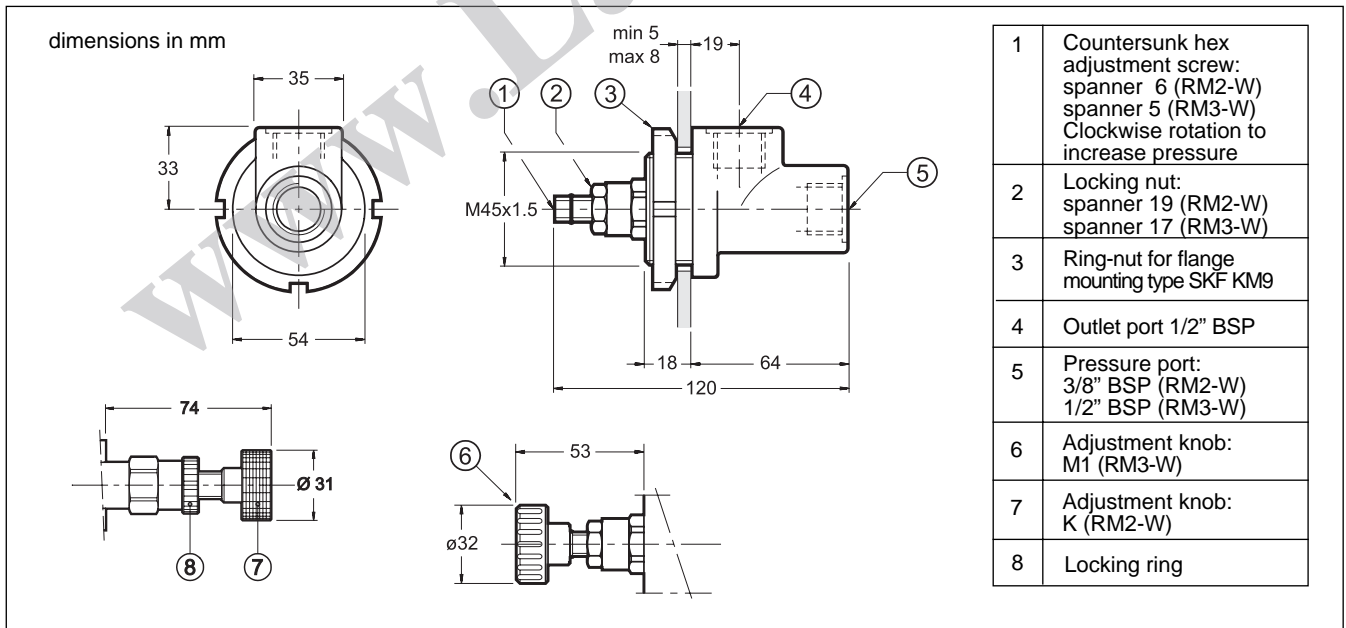
2 - CHARACTERISTIC CURVES (values obtained with viscosity of 36 cSt at 50°C)



3 - HYDRAULIC FLUIDS

Use mineral oil-based hydraulic fluids, with the addition of suitable anti-frothing and anti-oxidizing agents.
For the use of other types (water glycol, phosphate esters and others), please consult our technical department.

4 - OVERALL AND MOUNTING DIMENSIONS



DIPLOMATIC OLEODINAMICA SpA
20025 LEGNANO (MI) - P.le Bozzi, 1 / Via Edison
Tel. 0331/472111-472236 - Fax 0331/548328